

# COMMUNITY NEWS

As we move into 2021 no one can be quite sure what the COVID pandemic might bring over the next few months. We are now all back in lockdown and all need to pull together while our wonderful NHS roll out the vaccines.



What we do know for sure is that we need to keep looking after ourselves and each other. It might feel a bit much to commit to Dry January, Veganuary or some other New Year resolution at the moment but perhaps these Five Ways to Wellbeing might feel helpful?

The Five Ways to Wellbeing are practical and accessible things we can do each day which are good for our wellbeing. Make a call to an old friend, or write a letter. Keep moving – exercise doesn't need to be intense to be good for you! Do something nice for a friend, volunteer your time (or help out at home).

Try something new. Take a moment or two to be aware of the world around you and what you are feeling – being mindful can be very calming.

If you have ideas you'd like to share, or a suggestion for a group that might (virtually) get together to provide support to each other please send to [news@graftonparish.com](mailto:news@graftonparish.com) and we'll include in the February Community News.

In the meantime remember that we have support throughout the Parish via our brilliant village WhatsApp groups and the Grafton Parish Council response teams and Food Bank.

Note: the Five Ways to Wellbeing are based on research conducted by the New Economics Foundation (NEF) back in 2008.

**To join a Village WhatsApp group** - Text or WhatsApp: East Grafton (Tamara 07711 824864), West Grafton (Annie 07802 923344), Marten (Mike 07799 760417), Wexcombe (George 07786 332950) or Wilton (Tara 07833 320951). If you're new to What's App we can help too - just get in touch.

### Grafton Parish Council response teams

East Grafton	Kevin Burke	<b>07713 067113</b>
Marten	Mike Hyslop	<b>07799 760417</b>
West Grafton	Annie Whitcher	<b>07802 923344</b>
Wexcombe	George Hosier	<b>07786 332950</b>
Wilton	David Lemon	<b>07974 400224</b>



### Grafton Parish Council Food Bank.

If you are affected and need support then please call Kevin Burke on **07713 067113** who will treat your call with strict confidence and arrange for a delivery of basic essentials to be made on a regular basis.

### How well do you know our local walks?

The Bedwyn Footpaths Group has released a series of really local walks for you to enjoy. Taking you through villages, woodland and along the Kennet & Avon Canal, the walks will help you get to know the beautiful area you live in. The group also runs regular walking sessions and helps to maintain footpaths as well.

To download the walks, just go to:

[www.visitpewseyvale.co.uk/list/bedwyn-footpaths-collection](http://www.visitpewseyvale.co.uk/list/bedwyn-footpaths-collection)



The Bedwyn Footpaths Group always welcomes more members – to find out more, contact Judy at [bedwynfootpathsgroup@gmail.com](mailto:bedwynfootpathsgroup@gmail.com).



### Parish Council meeting

**Wednesday 13 January, 6pm via Zoom**

Details from [clerk@graftonparish.com](mailto:clerk@graftonparish.com)

Agendas, together with minutes from the last meeting, will be posted on all hamlet notice boards and on [www.graftonparish.com](http://www.graftonparish.com) as normal.

If you have any topic to raise or would like to join the meeting then please email [clerk@graftonparish.com](mailto:clerk@graftonparish.com) at least 5 days before the meeting.

Note: The provision of the white gates on the A338 at either end of East Grafton has been well received with residents noting a further reduction in the speed of vehicles at both entrances to the village.



Thank you Father Christmas and your trusty elf for taking the time to visit us all on Christmas Eve. You lit up a very quiet evening.



The Parish Council, St Nicholas' Church and the Coronation Hall took the decision to cancel "Carols by Candlelight" following the Government change in rules.

The level of support for the event has encouraged all three organisations to keep planning ready for when conditions are right. There will be a get together at some time - sorry to disappoint this time.



Like our Facebook page [www.facebook.com/GraftonParishCommunityNews](https://www.facebook.com/GraftonParishCommunityNews) or follow us on Twitter [www.twitter.com/graftonparish](https://www.twitter.com/graftonparish).



A reader writes to ask about the felling of trees on the Wilton Road. The September issue of the Community News warned that the Ash trees were being assessed for disease. Sadly the disease was confirmed in the trees which have been felled.

## Our Vicar writes

I have spent 2020 writing words of hope, encouragement and thanks like a clerical version of 'Old Mr Grace' from 'Are you being served?' What encouragement can I offer as we move into 2021?

This scripture text has been in my head for over a week: *'Come to me, all you that are weary and are carrying heavy burdens, and I will give you rest. Take my yoke upon you and learn from me; for I am gentle and humble in heart, and you will find rest for your souls. For my yoke is easy, and my burden is light.'*

On the towpath, just outside Great Bedwyn is a bench with a small plaque that says 'In memory of my dog Lewis who walked this path often.' Colin, whose friend the dog was, had his funeral a year ago, before Covid. The funeral was well attended.

The same spot is where another village character, Tony, taught my son how to fish. He died in the middle of last year and his funeral in comparison could not be attended by large numbers.

One place, two different memories about saying goodbye to people who are no longer with us. We have all said goodbye to 2020, but hopefully we will have not forgotten the good people around us.

The first of the vulnerable in our villages are being called in for inoculations already. We are by no means able to live what was a normal life and the new normal is something that we are yet able to work out. I return to the serenity prayer I spoke of in an earlier letter:

*Grant me the serenity to accept the things I cannot change, The courage to change the things I can, And the wisdom to know the difference.*

If 2020 has taught us one thing it is that clear answers are not always accessible to us. Let us enter this New Year with open minds and hearts as we face yet another set of challenges. There is a sense that much of what we faced last year is not going to go away. Let us approach it all with peace.

Every Blessing for the New Year, Michael

The Savernake Team continues to offer spiritual support and worship, including Sunday Services at 11am by zoom and daily prayer and reflections by email. More information is at [www.savernaketeam.org.uk/news-and-events](http://www.savernaketeam.org.uk/news-and-events)

### Links for local information

Events and news in the Pewsey Vale [visitpewseyvale.co.uk](http://visitpewseyvale.co.uk)  
Charity working for community development [communityfirst.org.uk](http://communityfirst.org.uk)  
Pewsey Area Board [pewsey.ourcommunitymatters.org.uk](http://pewsey.ourcommunitymatters.org.uk)  
Access Community notice boards and much more on [wiltshire.gov.uk](http://wiltshire.gov.uk)  
Grafton Parish [graftonparish.com](http://graftonparish.com)  
All the latest news releases [wiltshire.gov.uk/latestnews.htm](http://wiltshire.gov.uk/latestnews.htm)  
Heritage community of Wiltshire [heritageinwiltshire.wordpress.com](http://heritageinwiltshire.wordpress.com)  
Roadworks [wiltshire.gov.uk/roadshighwayspavements](http://wiltshire.gov.uk/roadshighwayspavements)  
Tree wardens for Wiltshire [wiltshiretreewardens.co.uk](http://wiltshiretreewardens.co.uk)

## Tourism in the Vale of Pewsey

We are lucky to live in a very beautiful part of the world, in which tourism is becoming more and more important to the local economy.

In 2015, in response to local business support, the Pewsey Community Area Partnership set up the Pewsey Vale Tourism Partnership, a voluntary community organisation. Since then, we have built our membership and have completed many infrastructure projects which otherwise wouldn't take place. For example, we have a number of converted phone boxes where you can find walking, cycling and local business information and leaflets. Our website ([www.visitpewseyvale.co.uk](http://www.visitpewseyvale.co.uk)) and social media is well visited, and we promote the area locally and regionally as well as nationally and internationally through our membership of VisitWiltshire and the Great West Way.

This year, we are running two more projects. The Itineraries Project focuses on walking routes for anyone wanting to visit for a day, weekend, week or longer, with lots of things to do along the way. The second project is aiming to achieve Walkers Are Welcome accreditation, for which we have to demonstrate local support and have a group to ensure the routes are maintained. This accreditation will give us publicity on the Walkers Are Welcome website ([walkersarewelcome.org.uk](http://walkersarewelcome.org.uk)) and the Partnership and our members will be able to advertise it as well.

If you would like to get involved, or if you have an interest in tourism and would like to become a member, then just email [susie@visitpewseyvale.co.uk](mailto:susie@visitpewseyvale.co.uk) for more information.

Timmy B Yoga  
Happy New Year!!



### Zoom Classes

Tuesday 6.30pm - 7.30pm Tonic Tuesdays  
Wednesday 9.30am - 10.30am Hatha Yoga  
Wednesday 4pm - 5pm Gentle Yoga  
Friday 9.30am - 10.30am Feel Good Fridays

Short of time?

Why not join us first thing for  
Yoga & Go?

Tuesday & Thursday 7.30am - 8am

For more info and how to book

[www.timmybyoga.co.uk](http://www.timmybyoga.co.uk)

Facebook - @timmybyoga

07747 780898

**printimage**  
Design and Print  
**Printing**  
on almost everything

01672 515444

[design@print-image.co.uk](mailto:design@print-image.co.uk)

## THE STABLES AT MANOR FARM

*Self catering accomodation near Marlborough, Wiltshire*

Two beautiful self catering holiday cottages in East Grafton. Perfect for holidays and short breaks or ideal extra space for visiting friends and family.

[www.thestablesbreaks.com](http://www.thestablesbreaks.com)

[pipmanorfarm@btconnect.com](mailto:pipmanorfarm@btconnect.com)

01672 810735 or 07884 453300



## BIKE MAINTENANCE, SERVICING AND REPAIR

**Free safety inspections, estimates and advice by  
fully qualified cycle mechanic.**

**Based in Wilton village. Competitive prices.**

**Contact Peter on:**

**07366 418484 or [honeybeebikes@gmail.com](mailto:honeybeebikes@gmail.com)**

## Pinckneys Farm Shop Marten

Selling home grown plants, home made produce and face coverings

Takeaway sandwiches and home made soup  
Ice creams, hot and cold drinks. Gifts and cards  
DIY livery available Credit cards accepted  
Contact Wendy **07989 228864**



Victoria Lewis: 07786 868 192 | 01264 731408

No. 5 Basset Cottage, Wexcombe, Marlborough, SN8 3SQ  
www.doggroomingbyvictoria.co.uk victoria@doggroomingbyvictoria.co.uk

Fish delivered from the shore on Thursdays  
enquiries@gastronicks.co.uk



## VISIT YOUR LOCAL DELI

www.gastronicks.co.uk and follow us on

**Friendly service, personally sourced products:**

Oils & Vinegars  
**Pasta, Pestos & Sauces**

**Hampers & Gifts**  
**Artisan Cheeses**  
**Savouries & Charcuterie**  
**Fine Wines & Spirits**

**New Forest Chocolates & Purbeck Ice Cream**  
**Regular Landings of Fresh Fish**  
**Wood-Fired Pizza Nights**



**Open Monday to Saturday**  
**Made to Order Paninis & Sandwiches**

Visit us soon at:

4 Garlands Estate, Cadley Road  
Collingbourne Ducis,  
Wilts, SN8 3LB  
01264 852701



Neck pain, bad back, painful shoulder, twisted your knee, sprained ankle  
want to move better to stay fit and active....

**We can help you!**

Friendly trusted knowledgeable professionals in physiotherapy,  
soft tissue and sports massage therapy and movement rehab with pilates

Tel: **07958 599716** email: [info@amandamarshphysiotherapy.co.uk](mailto:info@amandamarshphysiotherapy.co.uk)

Marlborough Golf Club and Whitehorse CrossFit Gym

[www.amandamarshphysiotherapy.co.uk](http://www.amandamarshphysiotherapy.co.uk)

**BOOK  
ONLINE!**

## News from The Swan

As you will all be aware we are again closed, **except for takeaways**, and hopefully **our shop** will make a return as it looks like this will be the case for the foreseeable future. Please look out for our new 2021 food offerings that we are currently working on ...

Please consider shopping locally and using the Swan. We have not been able to function properly for the last ten months and, as such, like so many businesses, it is a difficult time for us and we would like to stay open as best we can, and still be here for you after Covid.

With limited time to get this article in The Community News before publication, we include a flyer with this issue, but for up-to-date news, please continue to check our **website** and **Facebook** page.

We would like to thank the wonderful people in Grafton Parish for their continued support.

(01672) 870274

[www.theswanwilton.co.uk](http://www.theswanwilton.co.uk)



## News in brief

### Coronation Hall

Due to the current Lockdown restrictions, the Hall remains closed for all classes, private hires and parties until further notice. However, Public Health England have advised that some Well-being/Educational Groups can still meet which means that the Alzheimers Group will still be running at the Hall.

Please keep in contact with your class instructor to check when they will be returning to the Hall. We will, of course, publicise any updates to hiring conditions as soon as we are able, through the Community News.

### St Nicholas' Church

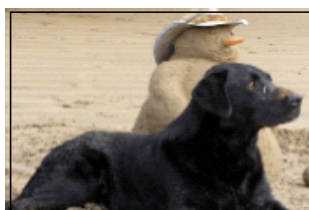
You will probably have seen that the church has been closed for some time now. There is a problem with the wooden decorative ceiling. Pieces are occasionally falling down and the insurance will not cover any accident which may occur as a result until the cause can be established.

Various alternatives are being investigated and plans are being put together to find a solution or solutions. The PCC is working hard to remedy the situation.

### The census is taking place in March 2021

The Office for National Statistics (ONS) carries out this survey. It takes place every 10 years and provides a picture of all the people and households in England and Wales. By taking part and encouraging others to do the same, you can help make sure that you and your community get the services you need.

Nearer the time, the ONS will provide more information and there will be plenty of help to take part for people who need it. Find out more at [www.census.gov.uk](http://www.census.gov.uk)



### Do you need help with your pet?

Whether you are out working, feeling under the weather or have other pressing issues, I am on hand to help you out. I am fully insured, first aid trained and D.B.S. checked and ready to assist with dog walking or a home visit for your pet or to house sit.

**WAGTAILS.VIP**

**(Very Important Pet)**

Please call or text Debbie to find out more  
**07909 996639**

## Adie Cripps Professional Chimney Sweep

### Highly Recommended

Power Sweep, Vapour or  
Brush & Vac for a Professional,  
Clean, Friendly & Reliable Service.

Fully Insured and Certificate of Sweep Issued

T. **01672 512 438**

M. **07557 472 541**

E. [adie.cripps55@gmail.com](mailto:adie.cripps55@gmail.com)





### Dates for your diary

All events take place in the Coronation Hall unless otherwise specified. *St N* refers to St Nicholas' Church.

See [www.graftonparish.com](http://www.graftonparish.com), call **07479 281809** or email [hall@graftonparish.com](mailto:hall@graftonparish.com) for Coronation Hall booking information and details of gazebo hire.

### JANUARY 2021

13 18.00 Parish Council meeting *Zoom*

### For help and information

Link Scheme	0771 7006787
Police emergency	999 or 112 - information 101
Member of Parliament	Danny Kruger 01380 729358
County Councillor	Stuart Wheeler 01672 810285

### Local commercial listing

Baby sitting	Sophie	07557 915052
B&B Grafton	Victoria Frost	07557 791604
Builder	Sam Sanchez	07887 991249
Celebration Cakes	<a href="http://www.nattiesbakesandbites.co.uk">www.nattiesbakesandbites.co.uk</a>	
Computer issues	Stuart	07881 912477
Disco and Karaoke	Pete Vallis	01672 811326
Dog Grooming	Victoria	07786 868192
Dog training/walking	Carrie Holborow	07546 941709
Double glazing	David Willcocks	01672 811979
Flowers	Gill Campbell	07833 670693
Gardening	Sue Upham	01672 810526
Grafton Garage	Tony Gilbert	07845 006890
Homeopathy	Emma H-Byass	07540 773531
Logs/tree surgeon	Jeremy Hawkins	07980 536156
Painting & Decorating	Neil Anderson	01264 731362
Personal trainer	Hen Mackinnon	07977 511959
Pest Control	Julie Wilson	01672 811479
Storage/lock up	David Lemon	01672 870266
Sunflowers at Grafton	Julie McLernon	01672 810478
Swan Inn	Bill Clemence	01672 870274

### Community Contacts

Church flowers/cleaning	Liz Hosier 01264 731242
Vicar, M. McHugh	01672 870779
Community News	<a href="mailto:news@graftonparish.com">news@graftonparish.com</a>
Coronation Hall	07479 281809 <a href="mailto:hall@graftonparish.com">hall@graftonparish.com</a>
Junior Cricket	<a href="mailto:pdewinton@savills.com">pdewinton@savills.com</a>
Parish Council	<a href="mailto:clerk@graftonparish.com">clerk@graftonparish.com</a>
PCC Secretary	Millie Lemon 01672 870266
St Nicholas' services	<a href="http://www.savernaketeam.org.uk">www.savernaketeam.org.uk</a>
Winter Warmers	01264 731242 <a href="mailto:liz@wexcombefarm.co.uk">liz@wexcombefarm.co.uk</a>
Youth Activities	Text Annie 07802923344

### Local Clubs

Windmill Society	<a href="mailto:secretary@wiltonwindmill.co.uk">secretary@wiltonwindmill.co.uk</a>
Horticultural Society	01672 810364 Marijke Craig
Crofton Beam Engines	<a href="mailto:crofton@katrust.org.uk">crofton@katrust.org.uk</a>
Grafton Goslings	<a href="mailto:graftongoslings@yahoo.co.uk">graftongoslings@yahoo.co.uk</a>
Baby & Toddler Group	
Dance classes	07746 479345 Charlotte Price
Pilates	07769 580148 Tracey Rich
Yoga for All	07747 780898 Tim Brew
Yoga	01672 841553 Lizzy Hawnt
Zumba	07710 115324 Joanna Bury

Deadline for the next issue Friday 29 January

# CLARIDGE

## Funeral Service

*Friendly Independent family funeral directors,  
Available 24 hours a day, all year round*

**01672 511836**

**Parade Mews, The Parade, Marlborough, SN8 1NE**  
**[www.claridgefuneralservice.co.uk](http://www.claridgefuneralservice.co.uk)**  
**[daniel@claridgefuneralservice.co.uk](mailto:daniel@claridgefuneralservice.co.uk)**

### David Willcocks

Repairs to Double-Glazed windows, doors and conservatories, sealed-units, hinges, handles, locks, letterboxes, leaking conservatory roofs, doors and windows that will not open or close properly.

**Tel. 01672 811979 Mob 07966 216629**

e-mail [david.willcocks566@gmail.com](mailto:david.willcocks566@gmail.com)  
**[www.davidwillcocks.com](http://www.davidwillcocks.com)**

**MANNINGFORD  
CROFT**  
PROPERTY SALES  
AND LETTINGS  
MACLAINE

Sales **01672 564555**  
Mark Chick & Simon Walker

Lettings **01672 569890**  
Gabby Walker

Website: **[www.manningfordcroft.com](http://www.manningfordcroft.com)**

### White Mulberry Soft Furnishings

Hand-made roman blinds and curtains  
Made to measure wooden venetian and roller blinds  
Co-ordinating cushions, pelmets and tiebacks  
Curtain alterations

**[www.whitemulberry.co.uk](http://www.whitemulberry.co.uk)** for a free quotation

Please contact Ceri Cliss on **07780 688566**  
or email [info@whitemulberry.co.uk](mailto:info@whitemulberry.co.uk)

### Footsteps Podiatry Services 07881802386

Please call Katie to arrange an appointment for all aspects of chiropody or podiatric footcare required.

Clinic based in Tidworth Leisure Centre or alternatively home visits can be arranged.

**Nailcare, Verrucae,  
Nail Surgery, Biomechanics,  
Dermal Filler,**



**The COLLEGE  
of PODIATRY**  
REPRESENTING CHIROPODISTS AND  
PODIATRISTS ACROSS THE UK



### Jason Lewis Carpenter

### Carpentry & Maintenance

All building work undertaken, painting, tiling, all types of locks, kitchens, home improvements, plastic doors & windows, general maintenance.

References available on request.

**07990 512342 [Jasonlewis08@aol.com](mailto:Jasonlewis08@aol.com)**

Printed by RIDGEWAY PRESS [www.ridgewaypress.co.uk](http://www.ridgewaypress.co.uk)

Email [info@ridgewaypress.co.uk](mailto:info@ridgewaypress.co.uk) Tel **01256 300420**

**Advertising rates per issue:**  $\frac{1}{12}$  page £5.50,  $\frac{1}{6}$  page £11,  $\frac{1}{4}$  page £16.50

Email [news@graftonparish.com](mailto:news@graftonparish.com) - Editorial rights reserved